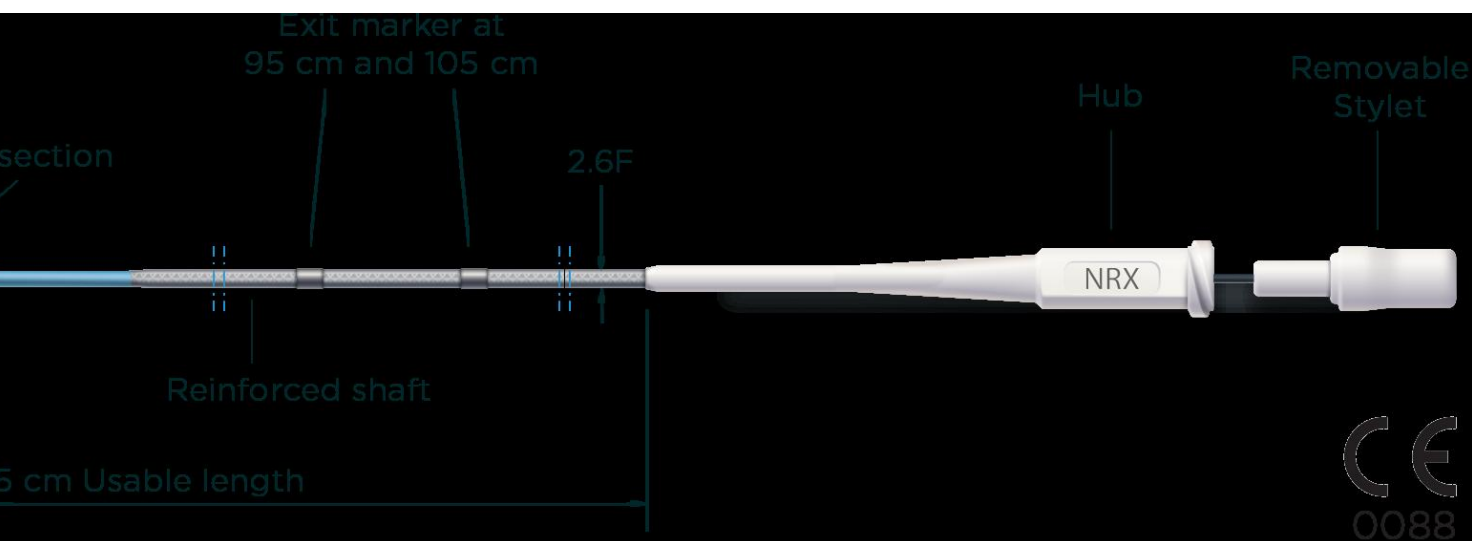


NHANCER RX DUAL LUMEN RX MICRO CATHETER



The NHancer Rx is a dual lumen Rapid Exchange single use device, consisting of a hub, a shaft, a distal tip at the Rx section and a proximal tip at the OTW section. The NHancer Rx has an over the wire (OTW) lumen that runs the length of the catheter and a rapid exchange (Rx) delivery lumen on the distal end.

The NHancer Rx has two depth markings located at 95 cm and 105 cm from the distal tip to indicate that the distal tip of the catheter is at the level of the distal tip of the guiding catheter. As aid in

positioning the NHancer Rx has a radiopaque marker, visible with fluoroscopy, identifying the distal end of the catheter and a second radiopaque marker identifies the distal end of the OTW lumen.

To ease catheter loading into the hemostasis device and the guiding catheter a removable stiffening stylet is placed in the OTW lumen at delivery.

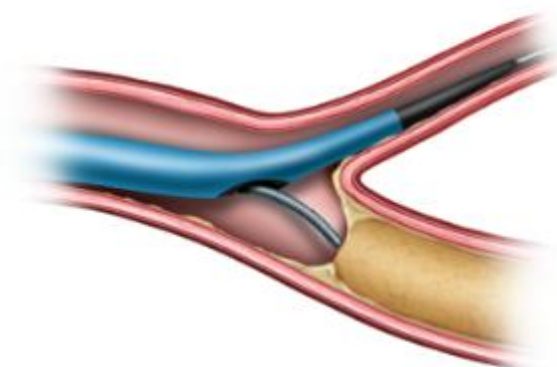
- Two distal exit ports for optimal access of side branches –
- Re-enforced shaft for optimal push –
- Torquer for optimal maneuverability –

FULL-LENGTH VARIABLE BRAID



POSITIONING AND TORQUE CONTROL

SOFT TAPERED TIP



TRUE VISUALISATION
ON BOTH EXIT PORTS

The catheter is intended to support a guide wire during access of vasculature and allows for exchange of guide wires and provides a conduit for the delivery of diagnostic contrast agents.

A guide wire is used to bring interventional devices (balloon catheters; Stent delivery systems) to and into the occlusion. Procedures with a high level of complexity require enhanced guide wire performance which is not always possible to achieve with conventional devices.

DISTAL SHAFT COATING	GUIDING CATHETER COMPATIBILITY	USABLE LENGTH	GUIDE WIRE COMPATIBILITY RX LUMEN	GUIDE WIRE COMPATIBILITY OTW LUMEN	MODEL	RX LUMEN LENGTH
18 cm	Hydrophilic (NDurance)	5F	135 cm	0.014□	0.014□	NRX14135 18



NHANCER RX

Cardiology


...advancing dual guidewire procedures...



Side branch access

Guidewire positioning and stability

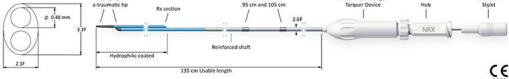

Procedural success rates



NHANCER RX

Dual Lumen Micro Catheter

Cardiology

Technical specification	Model NRX1413518	Technical specification	Model NRX1413518
Guidewire compatibility	0.014"	Guiding catheter compatibility	SF
OTW lumen	0.014"	Distal shaft coating	Hydrophilic (NDurance)
Guidewire compatibility	0.014"	Rx lumen length	18 cm
Rx lumen	0.014"	Tip design	Soft tapered tip
Usable length	135 cm		
Shaft inner diameter	0.48 mm		

Please see the Instructions for Use for a complete listing of the indications, contraindications, warnings and precautions.
Caution: Federal Law (U.S.) restricts this device to sale by or on the order of a physician.
NHancer™ is a trademark of IMDS.

Interventional Medical Device Solutions
Centraalbeheer Noord 150
9301 NZ Roden
The Netherlands
sales@imds.nl
Phone +31(0)50 8200230
Fax +31(0)50 8200231

For more information
www.imds.nl
© IMDS 2017
ITM150168 RS.0